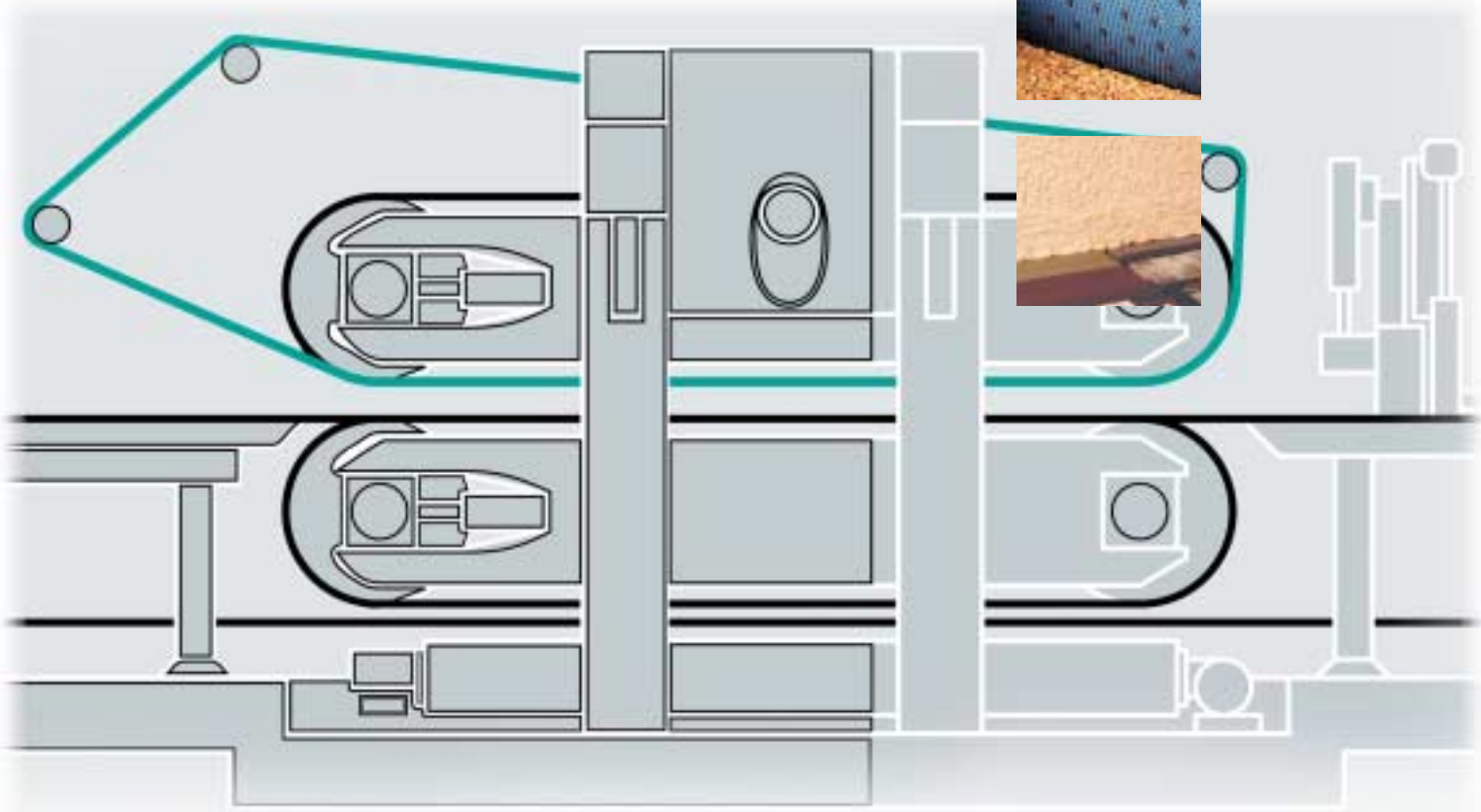


Take the last breath of air out of the chip mat

CONDUCTO
Ventilation belt



**Conducto® ventilation belt and
Transilon® pre-press belt:
The ideal duo from Siegling**

Conveyor and power transmission belts
made of modern synthetics
Worldwide leaders in technology, quality and service

SIEGLING
BELTING

CONDUCTO

Ventilation belt

In front of the main press, it's all a matter of interaction:

The pre-compression of the chip mat starts with the ventilation belt, which together with the pre-press and the forming belts forms an interactive combination. We've now optimised this interactive feature.

For the manufacturing of MDF and particleboards, the entire range of belts for the pre-press are now available as a complete package from Siegling. Just look at the advantages:

- ▶ one order
- ▶ one transaction
- ▶ one service partner.



The new Conducto® qualities from GKD combined with Siegling's technical improvements provide customers with real benefits.

The belts' suitability is stated in manufacturer declarations on ATEX and declarations of compliance drawn up in conjunction with the official body (in Germany the TÜV – or Technical Monitoring Body).

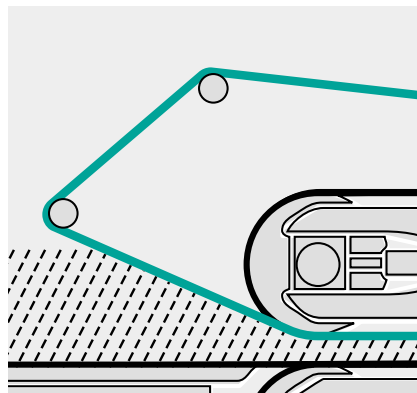
Amongst other things detailed operating instructions with information on the ATEX-compliant conveyor must be included with the declaration of compliance.

According to current legislation, processing belts must comply with the new ATEX regulations as of immediate effect.

Personal specialist consultation on all current and future ATEX aspects is also of course available to our customers.

Good ventilation

The ventilation belt with its uniform permeability presses the chip mat down onto the infeed section from a maximum dumping height – without leaving craters in the board. Thanks to its permeable but strong fabric structure and sealed edges, the belt masters two tasks at once: ventilation and pre-compression.

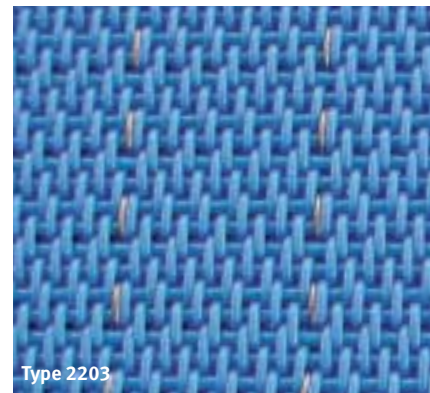


Pre-press belt in the production of MDF and particleboard. The chip mat is pre-compressed on the way to the press.

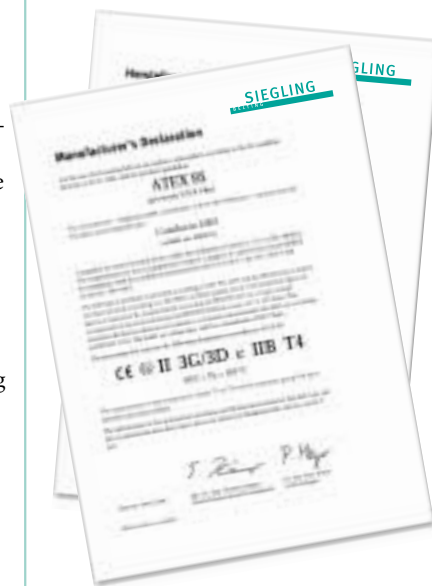
Safe static discharge

Warpwise woven polyester and bronze threads make the belt highly conductive and prevent electrostatic charging.

Safety is ensured since fire hazards cannot arise.



Conducto®: smooth surface and high permeability, flexibility and conductivity.



Electrostatic charge as per DIN EN 1718

Functional/product face	-18.0 V
Underside/contact face with pre-press belt	-16.0 V

Electrical resistance as per DIN EN 1637

R_{DI} longitudinally	
Material	$<1 \times 10_4 \Omega$
Splice	$<1 \times 10_4 \Omega$
R_{OB} longitudinally	
Functional face = contact face with chip mat	21.0 Ω
Underside = contact face with pre-press belt	1,1 Ω
R_D	$<1.0 \Omega$

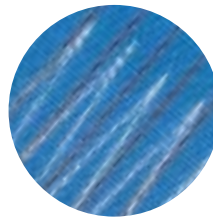
Quick fitting

Thanks to a new splicing technology developed by Siegling, the ventilation belt can be fitted without having to dismantle the pre-press, so line downtimes are nominal. Since the belts can be replaced quickly, the fitting times are reduced to a minimum, with an up to 70 % time-saving.

No soiling

The high-conductivity prevents the adhesion of chip mat material and as a result, there is no caking or damage to the belt. So instead of downtimes for cleaning, productivity increases significantly.

	Type 2203	Type 5090
Warp material	PES/bronze	PES/bronze
Weft material	PES	PES
Weave pattern	cross twill weave 2/1	twill weave 3/2
Tensile strength [N/mm]	170	260
Opening [µm]	420	320
Air permeability [l/m ² s 200 Pa]	2420	2320
cfm [127 Pa]	370	350
Total thickness [mm]	1.55	1.82
Weight [kg/m ²]	1.20	1.50
Temperature	-30 to +100 °C	-30 to +100 °C
SD-value* [N/mm] <small>(Tensile force at 1% elongation)</small>	20	24



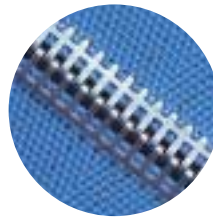
Siegling Z-splice

This inexpensive splice for Conducto® ventilation belts was especially designed by Siegling.

The principle: the belt laps are punch-cut with intermeshing Z-fingers, creating an extremely strong splice. The splice area is also reinforced for extra stability. The belt is spliced endless such that the splice leaves no mark on the chip mat.

In general, Conducto® is supplied as an endless belt ready for use. Siegling supplies the Z-splice open for on-site installation.

The Transilon® heating press used for forming and pre-press belts can also be used for Conducto®.



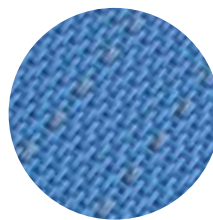
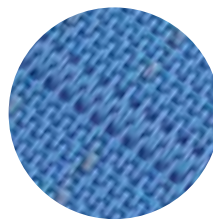
Hook splice

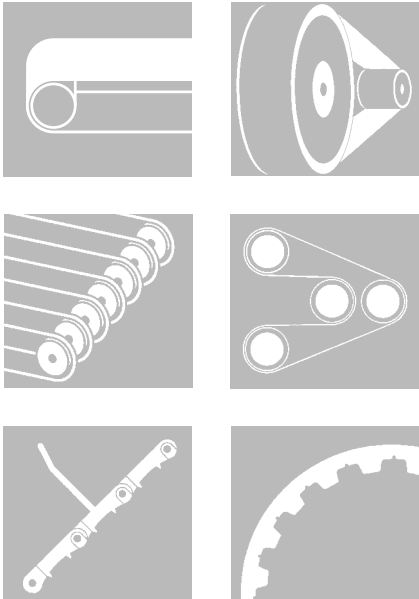
The hook splice is characterised by its high stability, long service life and easy handling. It can be fastened on the machine, but does slightly mark the chip mat.

Woven seams

Woven seams are the perfect solution for high quality fabrication. With their continuous fabric structure they leave no imprints and guarantee that air passes freely through the belt.

- The **woven pin splice** is made endless on the machine and can easily be removed. Extra fitting on the conveyor is not necessary.
- Belts with a **woven seam** are supplied endless.





The Siegling Product range

TRANSILON

Conveyor and processing belts

EXTREMULTUS

High-efficiency flat belts

PROLINK

Plastic modular belting

PROPOSITION

High-efficiency timing belts



① ② An important step in quality assurance: testing of material in the Siegling lab.



③ ④ State-of-the-art technology in all production facilities.

Committed staff, quality-orientated organisation and production processes ensure the constantly high standards of our products and services. The Siegling Quality Management System is certified in accordance with DIN EN ISO 9001:2000.

In addition to product quality, environmental protection is an important corporate goal. Early on we also introduced an environmental management system, certified in accordance with ISO 14001.



Worldwide Siegling Service

The Siegling Group employs more than 1600 people worldwide. Siegling production facilities are located in eight countries. Siegling has companies and agencies with stock and workshops in more than 50 countries. Siegling service centres provide qualified assistance at more than 300 locations throughout the world.

A member of the Forbo Group.

Ref. No. 239
Issue 07.05/2 – QU
Printed in Germany.

This paper was made from non-chlorine-bleached cellulose.

Reproduction of text or parts thereof only with our approval. Modifications reserved.

Registered trademarks
Siegling
Extremultus
Transilon
ProLink